

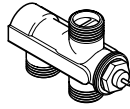


Senkrechtes Lanzenventil 40 mm /
Vertical lance valve 40 mm /
Robinet à lance verticale 40 mm



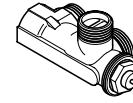
mit Bodenanschluß / floor connection /
avec connexion déssais au sol

- mit Außengewinde /
- external threads /
- avec raccordement fileté

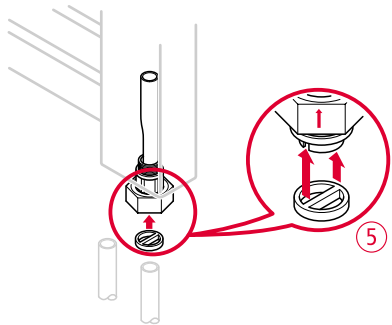
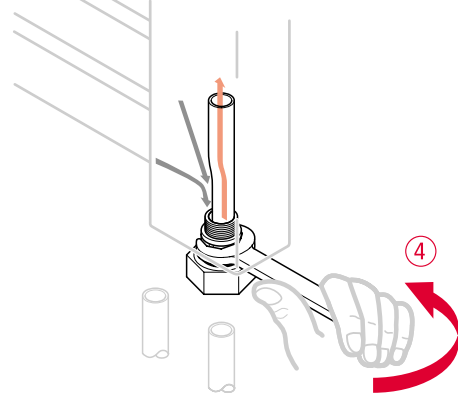
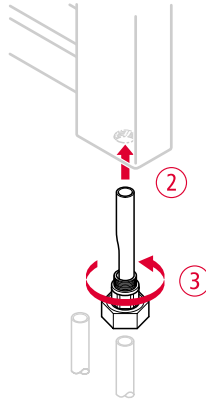
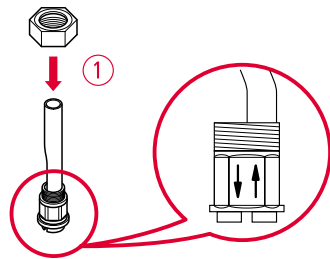


mit Wandanschluß / wall connection /
avec connexion de mural

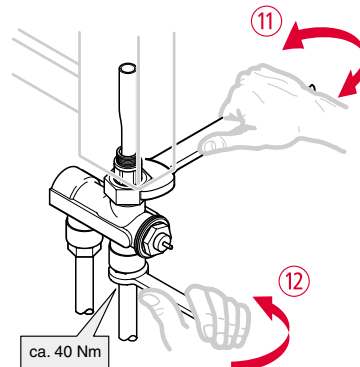
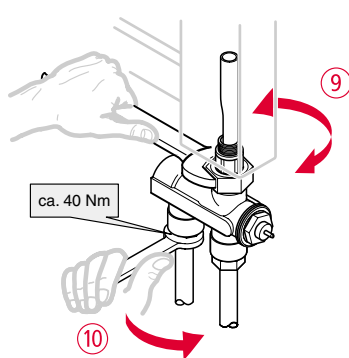
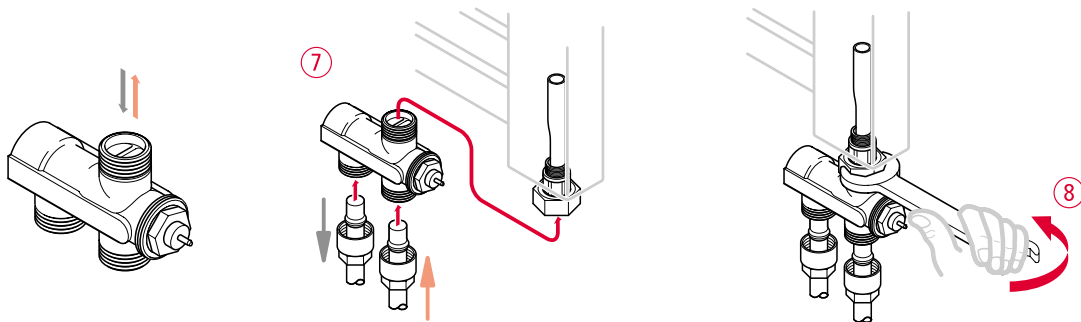
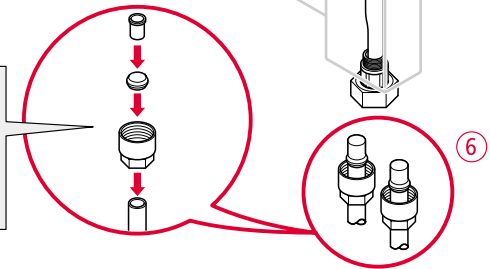
- mit Außengewinde /
- external threads /
- avec raccordement fileté



A Montage / Installation / Montage



Für die möglichen Heizkreisanschluß-Varianten siehe unter (B) /
For different connection possibilities to heating system see (B) /
Pour les d différents tubes de chauffage voir le tableau (B)

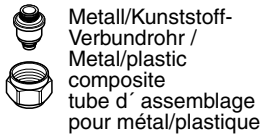




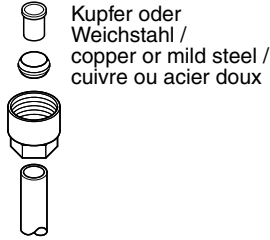
Senkrechtes Lanzenventil 40 mm /
Vertical lance valve 40 mm /
Robinet à lance verticale 40 mm



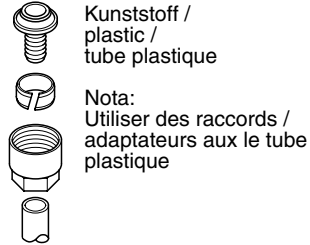
B Heizkreisanschluß-Varianten / Different connections to the heating system /
Différents tubes de chauffage



Metall/Kunststoff-
Verbundrohr /
Metal/plastic
composite
tube d' assemblage
pour métal/plastique



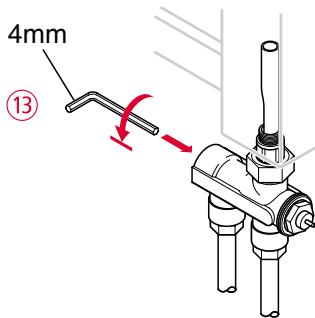
Kupfer oder
Weichstahl /
copper or mild steel /
cuivre ou acier doux



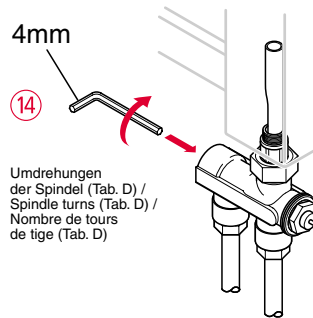
Kunststoff /
plastic /
tube plastique

Nota:
Utiliser des raccords /
adaptateurs aux le tube
plastique

C Voreinstellen / Pre-setting / Pré-régulation



13

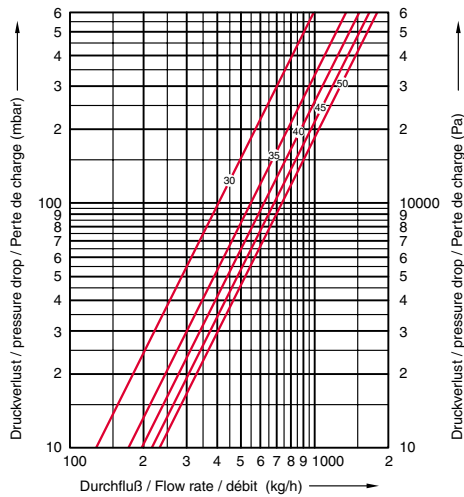


14

Umdrehungen
der Spindel (Tab. D) /
Spindle turns (Tab. D) /
Nombre de tours
de tige (Tab. D)

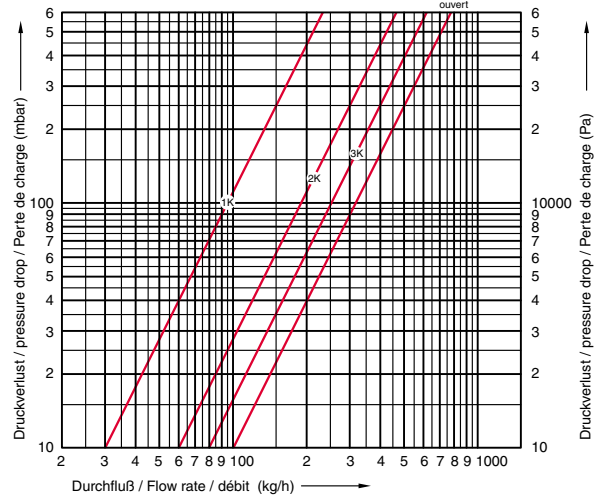
D kv-Werte / kv-values / Valeur kv

Einstellung: 1-Rohrausführung / adjustment: 1-pipe version /
rélage:système monotube



Thera 2 mit UBG Oberteil / Thera 2 with UBG cartridge / Thera 2 avec UBG partie supérieure	Umdrehungen der Spindel / Spindle turns / Nombre de tours de tige				
	3.0	3.5	4.0	4.5	5.0
Heizkörperanteil in % / Radiator proportion in % / Débit par le radiateur en %	50	35	30	25	20
KV-Wert in m³/h KV-value in m³/h KV-valeur en m³/h	1.3	1.75	1.95	2.15	2.3
Regeldifferenz 2K / Deviation 2K / Déviation de réglage 2K					
Betriebstemp. max. 130 °C / Temp. max. 130 °C / Temp. max. 130 °C					
Betriebsdruck max. 10 bar / Pressure max. 10 bar / Pression max. 10 bar					

Einstellung: 2-Rohrausführung / adjustment: 2-pipe version /
rélage:système bitube



Thera 2 mit UBG Oberteil / Thera 2 with UBG cartridge / Thera 2 avec UBG partie supérieure	Regeldifferenz in K / Deviation in K / Déviation de réglage en K			KVS-Wert in m³/h KVS-value in m³/h KVS-valeur en m³/h
	1	2	3	
KV-Wert in m³/h	0.3	0.6	0.8	1.0
KV-value in m³/h	Bei 1.5 Umdrehungen der Spindel / At 1.5 spindle turns/ En cas 1.5 tour de tige			
KV-valeur en m³/h				
Betriebstemp. max. 130 °C / Temp. max. 130 °C / Temp. max. 130 °C				
Betriebsdruck max. 10 bar / Pressure max. 10 bar / Pression max. 10 bar				

